



CD50 Polyclonal Antibody

Catalog No	YP-Ab-16945
Isotype	IgG
Reactivity	Human;Rat;Mouse;
Applications	WB;IF;ELISA
Gene Name	ICAM3
Protein Name	Intercellular adhesion molecule 3
Immunogen	The antiserum was produced against synthesized peptide derived from human CD50/ICAM-3. AA range:484-533
Specificity	CD50 Polyclonal Antibody detects endogenous levels of CD50 protein.
Formulation	Liquid in PBS containing 50% glycerol, 0.5% BSA and 0.02% sodium azide.
Source	Polyclonal, Rabbit,IgG
Purification	The antibody was affinity-purified from rabbit antiserum by affinity-chromatography using epitope-specific immunogen.
Dilution	Western Blot: 1/500 - 1/2000. Immunofluorescence: 1/200 - 1/1000. ELISA: 1/5000. Not yet tested in other applications.
Concentration	1 mg/ml
Purity	≥90%
Storage Stability	-20°C/1 year
Synonyms	ICAM3; Intercellular adhesion molecule 3; ICAM-3; CDw50; ICAM-R; CD antigen CD50
Observed Band	42-60kD
Cell Pathway	Membrane; Single-pass type I membrane protein.
Tissue Specificity	Leukocytes.
Function	function:ICAM proteins are ligands for the leukocyte adhesion protein LFA-1 (integrin alpha-L/beta-2). ICAM3 is also a ligand for integrin alpha-D/beta-2.,online information:ICAM-3,PTM:N-glycosylated; glycans consist of a mixture of tri- and tetra-antennary complex-type chains and high-mannose chains.,PTM:Upon stimulation by a physiologic stimuli becomes rapidly and transiently phosphorylated on serine residues.,similarity:Belongs to the immunoglobulin superfamily. ICAM family.,similarity:Contains 5 Ig-like C2-type (immunoglobulin-like) domains.,
Background	The protein encoded by this gene is a member of the intercellular adhesion molecule (ICAM) family. All ICAM proteins are type I transmembrane glycoproteins, contain 2-9 immunoglobulin-like C2-type domains, and bind to the leukocyte adhesion LFA-1 protein. This protein is constitutively and abundantly expressed by all leukocytes and may be the most important ligand for LFA-1 in the



initiation of the immune response. It functions not only as an adhesion molecule, but also as a potent signalling molecule. Alternative splicing results in multiple transcript variants encoding different isoforms. [provided by RefSeq, Feb 2016],

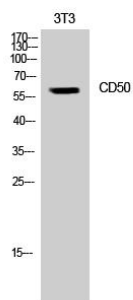
matters needing attention

Avoid repeated freezing and thawing!

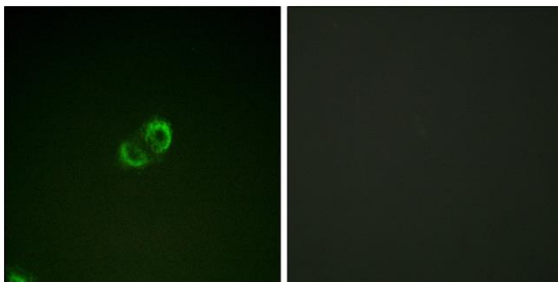
Usage suggestions

This product can be used in immunological reaction related experiments. For more information, please consult technical personnel.

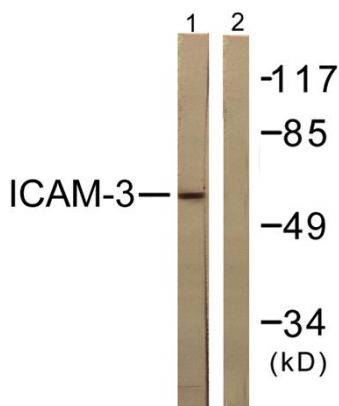
Products Images



Western Blot analysis of NIH-3T3 cells using CD50 Polyclonal Antibody



Immunofluorescence analysis of A549 cells, using CD50/ICAM-3 Antibody. The picture on the right is blocked with the synthesized peptide.



Western blot analysis of lysates from NIH/3T3 cells, treated with TNF-a 20ng/ml 5', using CD50/ICAM-3 Antibody. The lane on the right is blocked with the synthesized peptide.